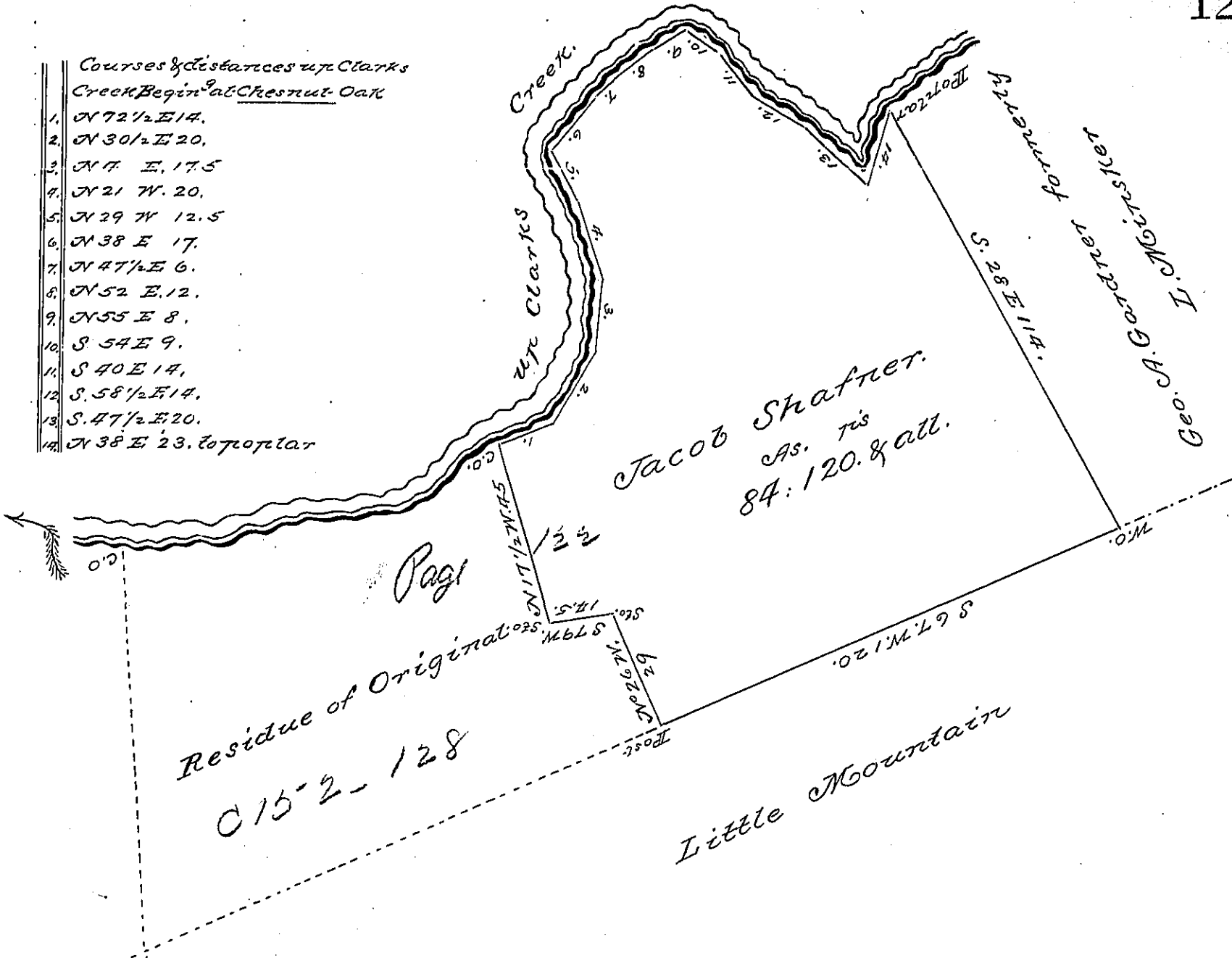


- Courses & Distances up Clarks Creek Begin^d at Chestnut Oak
1. N 72 1/2 E 14.
 2. N 30 1/2 E 20.
 3. N 7 E 17.5
 4. N 21 W 20.
 5. N 29 W 12.5
 6. N 38 E 17.
 7. N 47 1/2 E 6.
 8. N 52 E 12.
 9. N 55 E 8.
 10. S 54 E 9.
 11. S 40 E 14.
 12. S 58 1/2 E 14.
 13. S 47 1/2 E 20.
 14. N 38 E 23. to top of ar



Surveyed March 13. 1828 for John Bohl. Situate in Middle Paston Township Dauphin County containing Eighty four acres ~~forty~~ ^{one hundred twenty} perches and allowance part of a larger tract granted to Jacob Shaffer by Application of 25th May A.D. 1769. No 4019.

Gabriel Hiester Esqr. }
S. Gen. Penna.

John Davis D.S.

IN TESTIMONY that the above is a copy of the original remaining on file in the Department of Internal Affairs of Pennsylvania, made conformably to an Act of Assembly approved the 16th day of February, 1833, I have hereunto set my Hand and caused the Seal of said Department to be affixed at Harrisburg, this

Third day of August 1897

James W. Patton
Secretary of Internal Affairs.